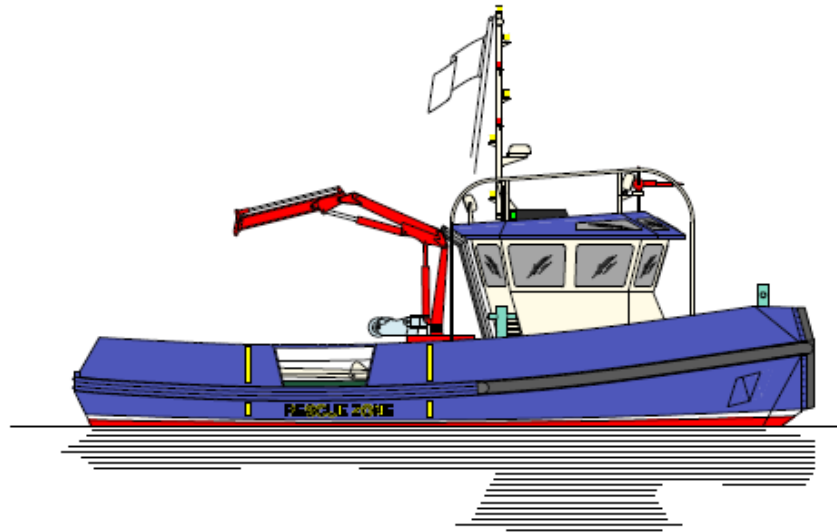


Attantis

MARINE SERVICE LTD.



AMS BOATYARD
Building of Steel and Aluminium Workboats
Tuzla, Istanbul, Turkey



Main Objectives:

- **Building of Steel and Aluminum Workboats upto 24 m:**
 - **Tug Boats, Mooring Boats**
 - **Crew Boats, Pilot Boats**
 - **Patrol and Rescue Boats**
 - **Ambulance Boats**
 - **Anti-pollution Boats**
 - **Barges, Landing Crafts**
- **Alternative Lighter Construction by HDPE**
- **Yachts**



Our Vision:

- Our vision is to be the best boat builder capable to cover all requirements of our world-wide clients in the maritime industry.

Our Mission:

- Be customer focused
- Remain reliable, honest and friendly
- Grow with careful steps

Our Values:

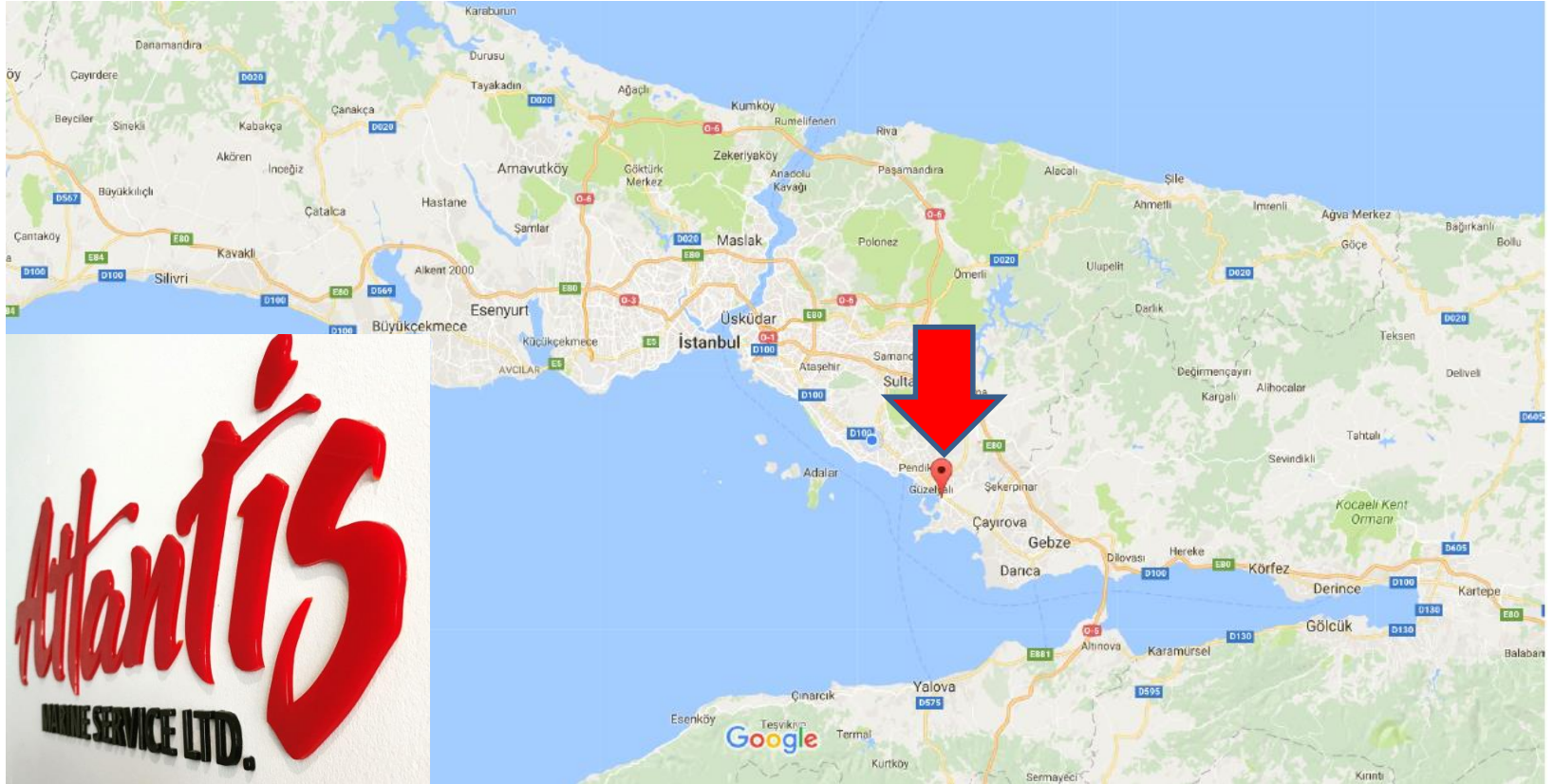
- Transparency, honesty and discipline in all we do
- Commitment to excellence and customer satisfaction

Certificates:



We are in Istanbul, Turkey....





AMS Boatyard in Tuzla/Istanbul/Turkey



AMS Boatyard in Tuzla/Istanbul/Turkey



AMS Boatyard in Tuzla/Istanbul/Turkey



AMS Boatyard in Tuzla/Istanbul/Turkey



AMS Boatyard in Tuzla/Istanbul/Turkey



Capacity of Boatyard:

- **Boatyard dimensions 25x12 m with ceiling height of 10 m.**
- **Max. boat length to be built: 24 m.**
- **Max. boat height to be built: 8 m.**
- **Max. boat weight to be built: 100 ton.**
- **Head crane capacity: SWL 10 ton + SWL 5 ton.**
- **Accessible mobile crane capacity: SWL 100 ton.**
- **Means of launching: conventional slipway by pulleys and ropes.**
- **Distance from gate to slipway: 30 m.**



Management Structure:

- **Caner Ararat:**
 - **Owner & Managing Partner**
 - **Naval Architect & Marine Engineer**
 - **Experience: 28 years**
 - **Project Responsibilities: Marketing, Procurement, Admin.**
- **Cuneyt Niran:**
 - **Owner & Managing Partner**
 - **Naval Architect & Marine Engineer**
 - **Experience: 28 years**
 - **Project Responsibilities: Subcontractors, Safety, Admin.**

Workforce:



- 4 Naval Architects and Marine Engineers
- 10 permanent workers
- Unlimited workforce from local sub-contractors
- Design and Engineering support from local design office
- Local office available for IACS member class societies



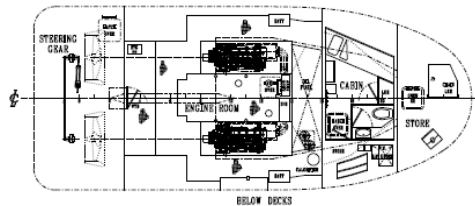
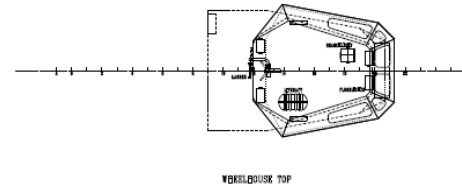
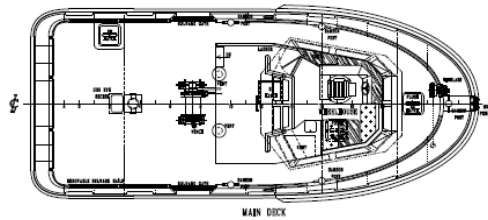
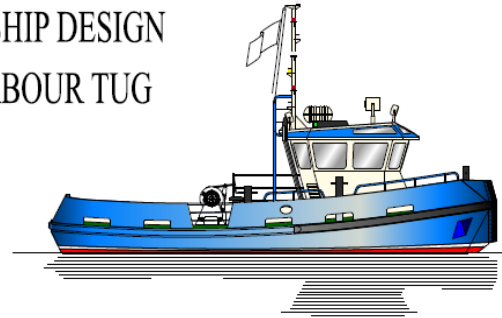
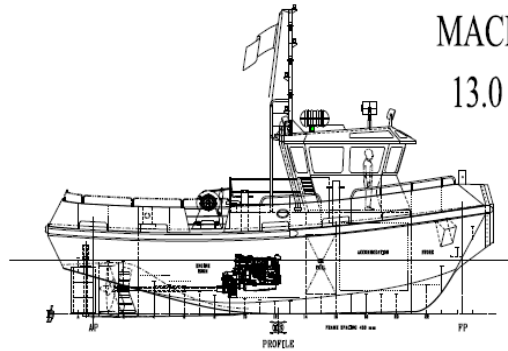
Activities Performed In-House by Own Staff and Sub-Contractors:

- **Hull Fabrication and Painting**
- **Piping and Outfitting**
- **Machinery, Equipment and Electricity**
- **Carpentry**
- **Launching and Trials**

Activities Outsourced:

- **Design and Engineering**
- **Steel and Aluminium CNC Cutting**
- **NDT**
- **Classification**

MACDUFF SHIP DESIGN
13.0 m HARBOUR TUG

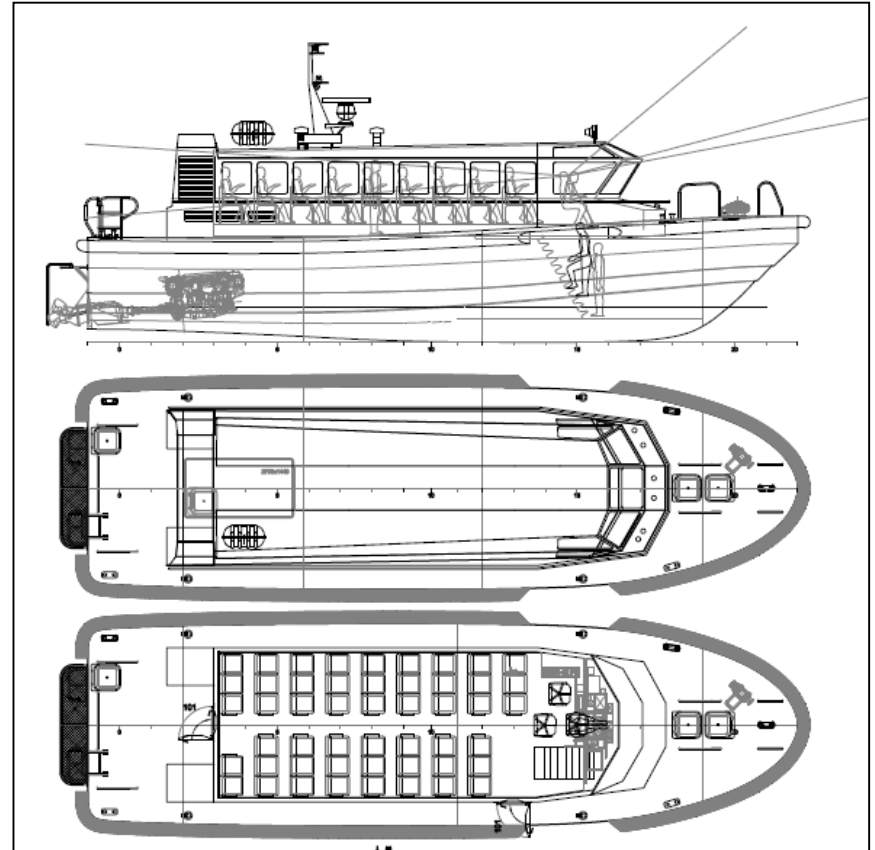
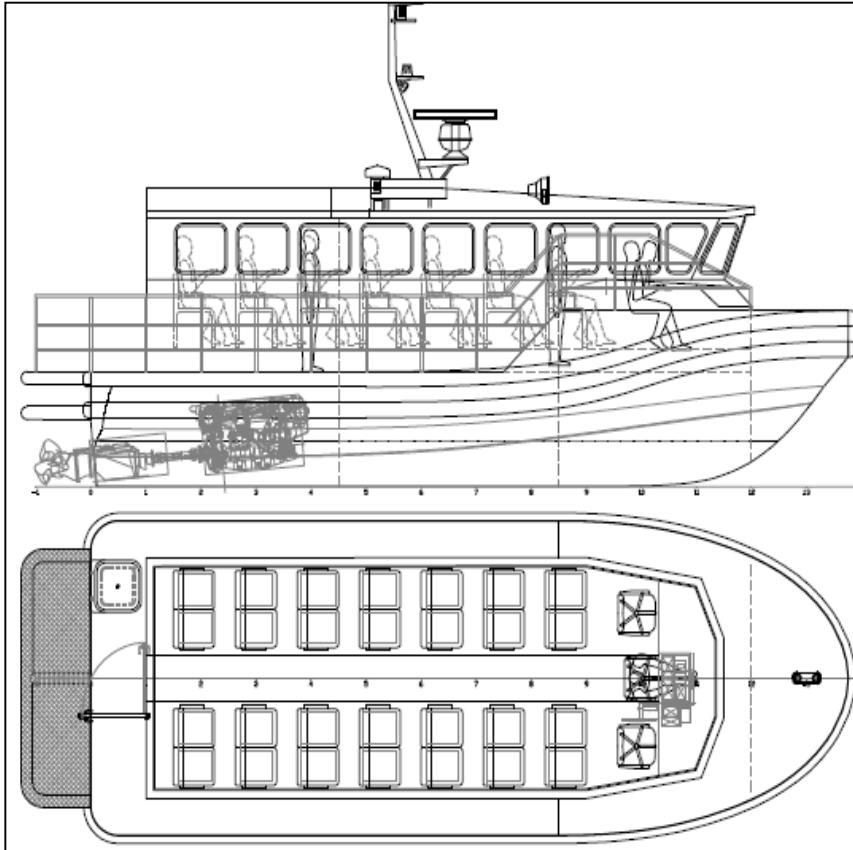


PRINCIPAL DIMENSIONS

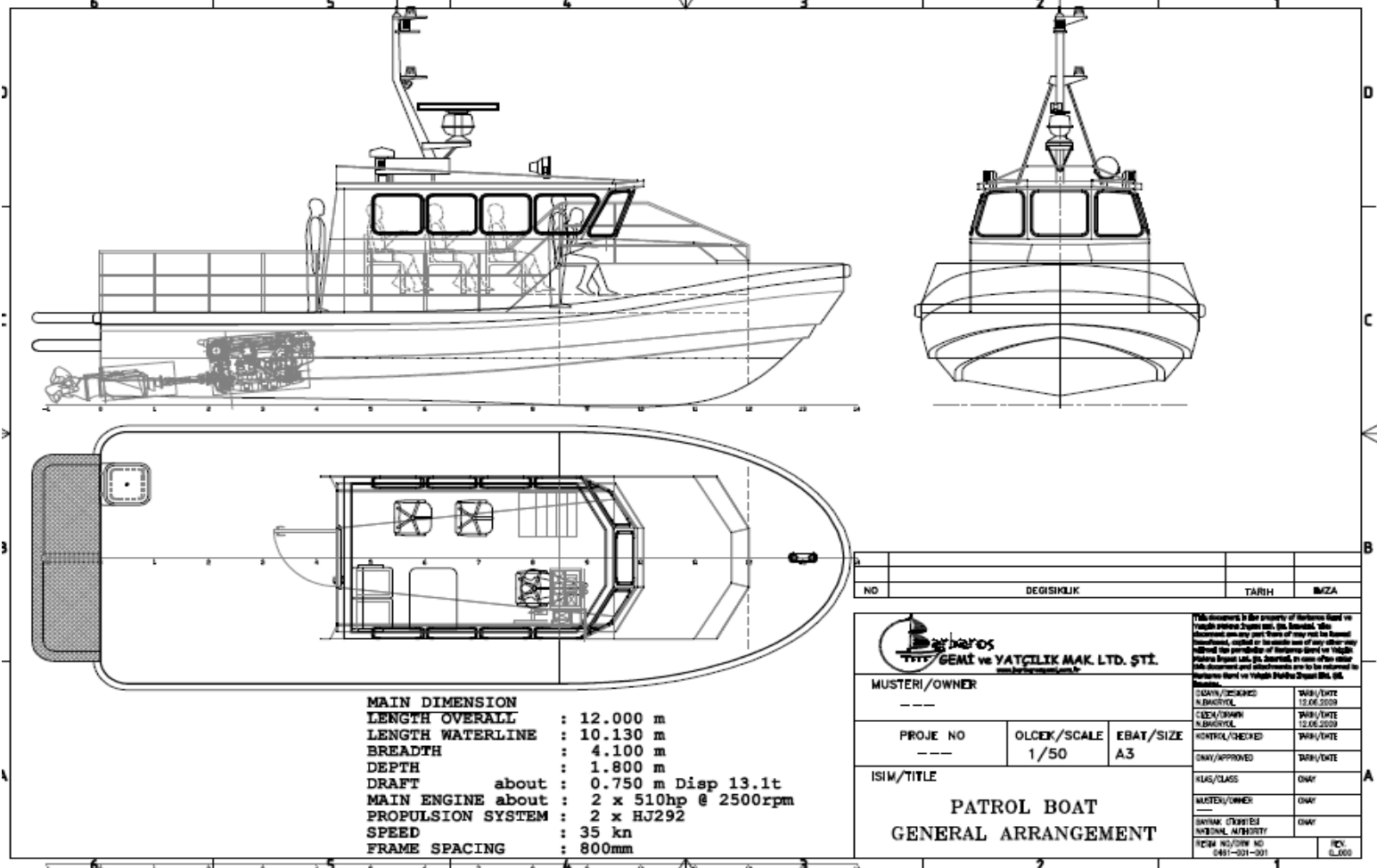
| | |
|--------------------|---------|
| LENGTH O.A. (Hull) | 13.00 m |
| LENGTH B.P. | 10.97 m |
| BREADTH MLD. | 5.40 m |
| DEPTH MLD. | 2.47 m |

| NO. | DESCRIPTION | UNIT | VALUE | UNIT |
|-----|----------------------------|------|-------|------|
| 1 | LENGTH O.A. (HULL) | m | 13.00 | |
| 2 | LENGTH B.P. | m | 10.97 | |
| 3 | BREADTH MLD. | m | 5.40 | |
| 4 | DEPTH MLD. | m | 2.47 | |
| 5 | ENGINE POWER | kw | 150 | |
| 6 | ENGINE TYPE | | ISUZU | |
| 7 | ENGINE MODEL | | ISUZU | |
| 8 | ENGINE SERIAL NO. | | ISUZU | |
| 9 | ENGINE MANUFACTURER | | ISUZU | |
| 10 | ENGINE INSTALLATION DATE | | ISUZU | |
| 11 | ENGINE MAINTENANCE DATE | | ISUZU | |
| 12 | ENGINE OIL CHANGE DATE | | ISUZU | |
| 13 | ENGINE OIL CHANGE INTERVAL | | ISUZU | |
| 14 | ENGINE OIL CHANGE INTERVAL | | ISUZU | |
| 15 | ENGINE OIL CHANGE INTERVAL | | ISUZU | |

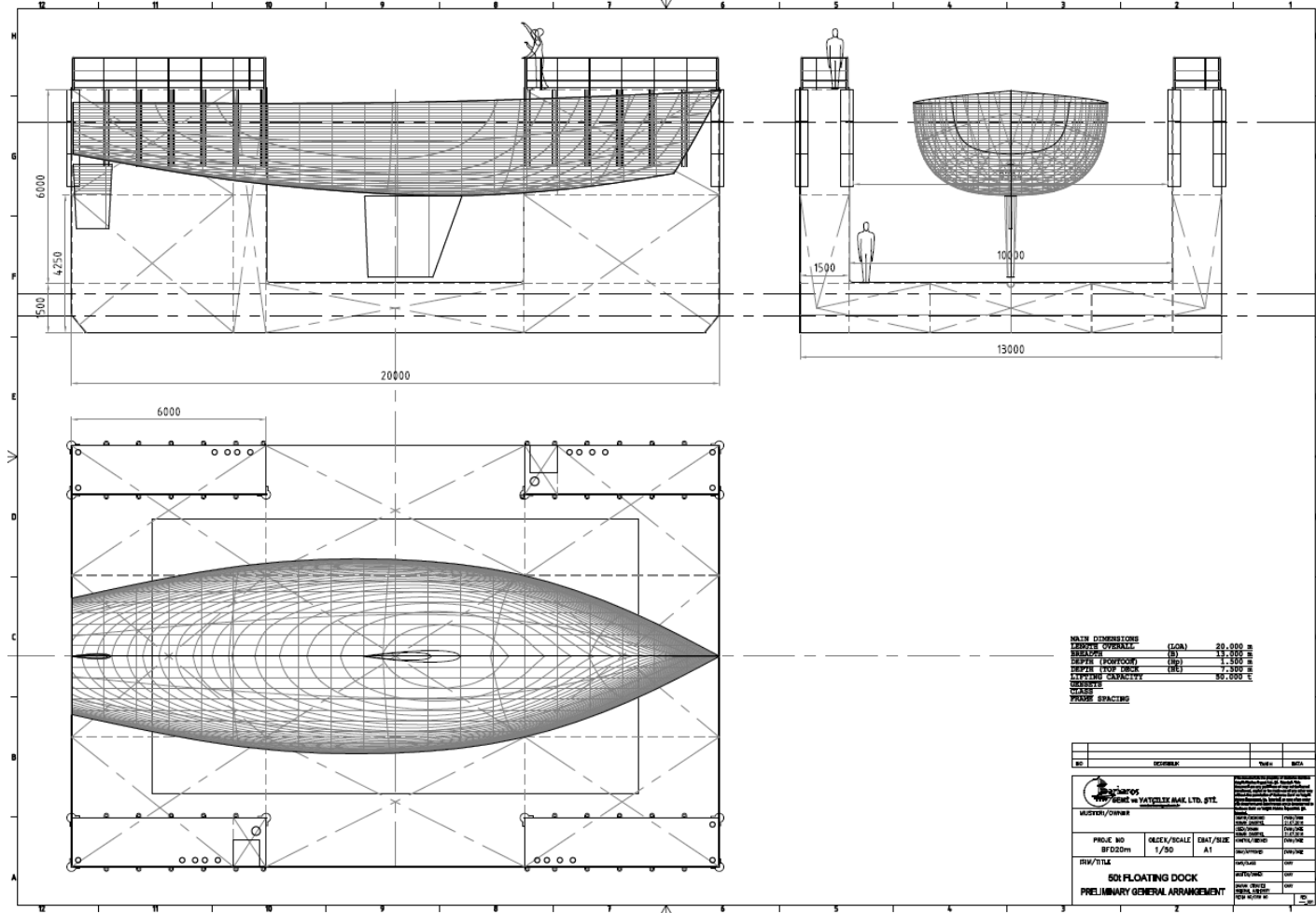
Harbour Tugboats



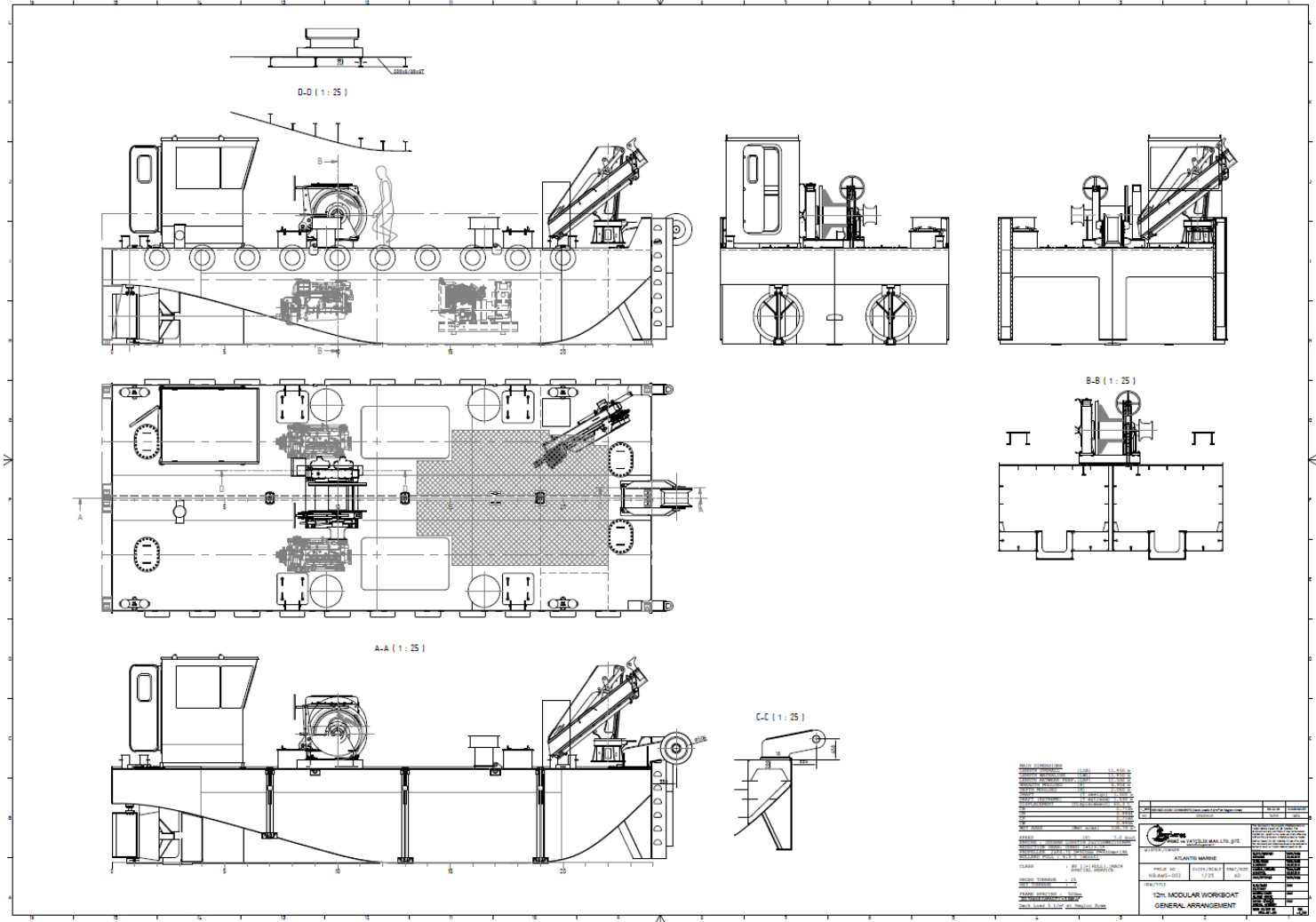
Aluminum High Speed Crew Boats



Pilot Boats



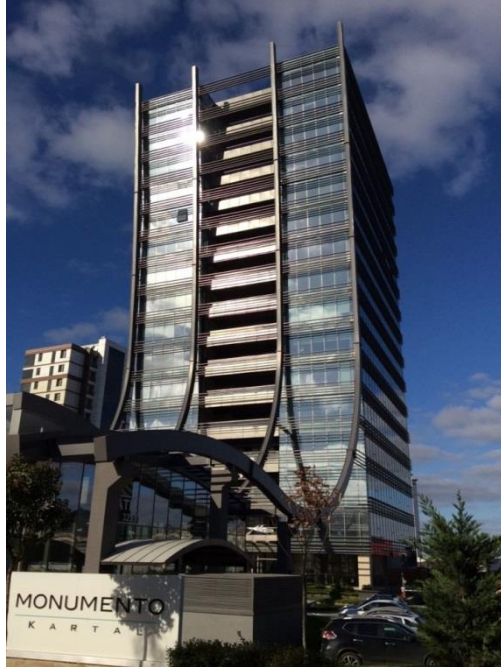
Floating Docks for Yachts/Workboats



Modular MultiCats



New Building Experience



AMS Head Office in Kartal/Istanbul/Turkey

ATLANTIS MARINE SERVİS DENİZCİLİK SAN. VE TİC. LTD. STİ.

Esentepe Mah. Milangaz Cad. 75/A, Monumento Kartal İş Merkezi No:103

Kartal, 34870, İstanbul, **Turkey**

Tel: +90 216 290 12 06

Fax: +90 216 290 12 07

www.atlantismarine.com.tr



Caner Ararat

Managing Partner

Naval Architect & Marine Engineer

Phone: +90 532 3636830

E-mail:

caner@atlantismarine.com.tr



Cuneyt Niran

Managing Partner

Naval Architect & Marine Engineer

Oceangoing Chief Engineer

Phone: +90 532 3170848

E-mail:

cniran@atlantismarine.com.tr